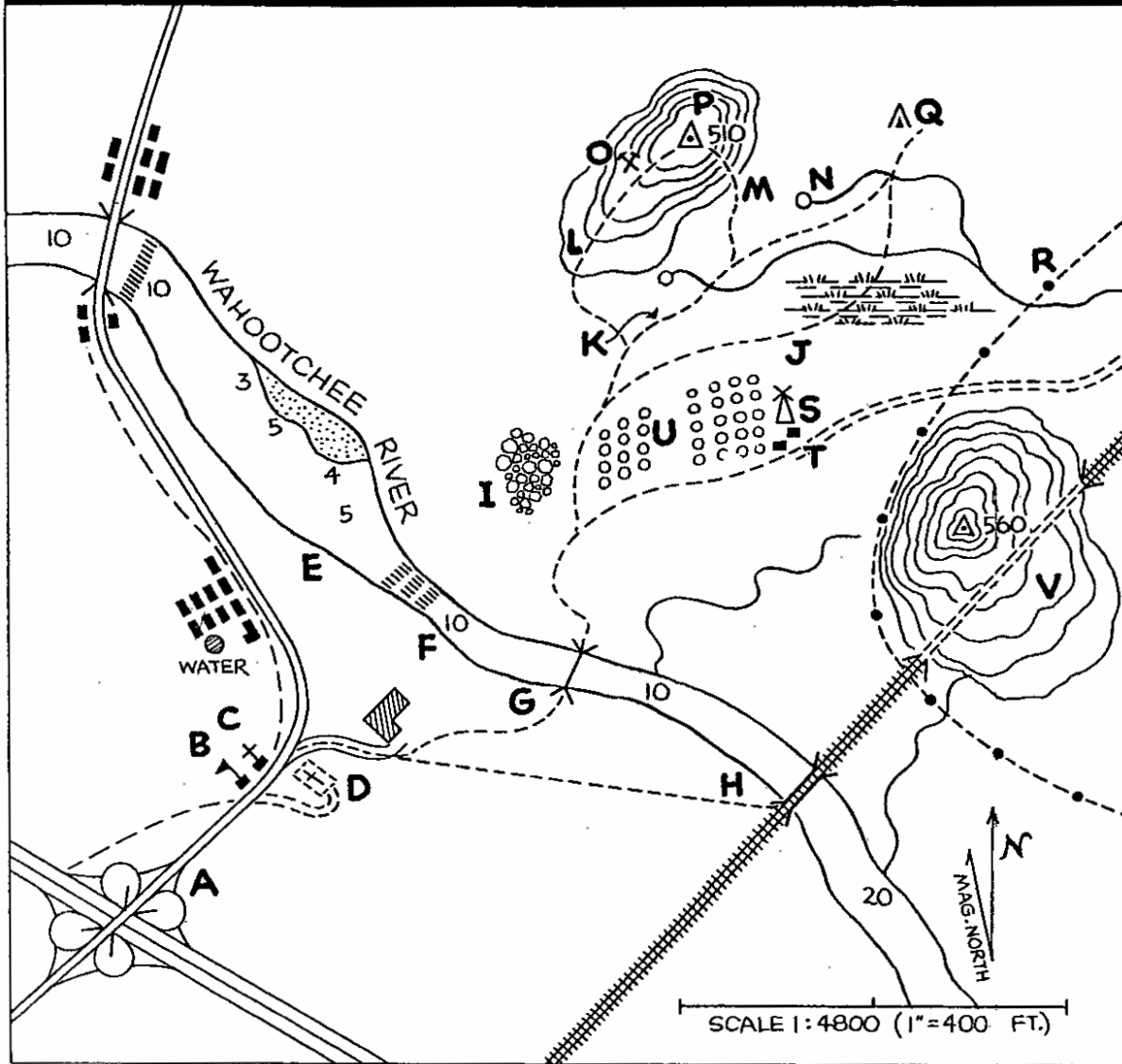


PROBLEMS:

DATE: JULY 9, 1967. LET'S SUPPOSE YOU'RE STARTING A HIKE AT **A** AND HEADING FOR **Q**.

- ① FOR LOCAL INFORMATION OR IN CASE OF EMERGENCY WOULD YOU GO TO **B**, **C**, OR **D**? WHY?
- ② THE WAHOOTCHEE RIVER FLOWS FROM **NW** TO **SE**. TO PADDLE DOWNSTREAM, WOULD IT BE SAFER TO LAUNCH CANOES AT **E** OR **F**? WHY?
- ③ WOULD YOU CROSS THE RIVER AT **G** OR **H**? WHY?
- ④ WHERE WOULD YOU MOST LIKELY FIND FIREWOOD—**I** OR **U**? WHY?
- ⑤ WHICH TRAIL WOULD YOU TAKE—**J** OR **K**? WHY?
- ⑥ WHICH IS THE EASIER WAY TO REACH **P**—TRAIL **L** OR **M**? WHY?
- ⑦ WOULD YOU AVOID GOING INTO **O**? WHY?
- ⑧ HOW HIGH IS HILL **P**?
- ⑨ WHERE IS THE NEAREST PLACE FROM **Q** TO GET WATER?
- ⑩ WHAT DOES THE SYMBOL AT **Q** STAND FOR?
- ⑪ THERE ARE STEEL TOWERS ALONG **R**. IS IT SAFE TO CLIMB THEM?
- ⑫ WHAT DOES THE SYMBOL AT **S** STAND FOR?
- ⑬ IF YOU WANTED SOME WATER FROM A WELL NEAR **U**, WHERE WOULD YOU ASK? WHY?
- ⑭ WHERE IS PROBABLY THE SAFEST PLACE ON THE RIVER TO GO SWIMMING?
- ⑮ DOES RR GO OVER HILL AT **V**?

MAP READING QUIZ



ANSWERS:

- ① TELEPHONE LINE NEXT TO IT. **B** IS A SCHOOL AND PROBABLY CLOSED IN SUMMER. **D** IS A CEMETERY. LAUNCH THEM AT **F**. THE MAP SHOWS RAPIDS BETWEEN **E** AND **F**.
- ② USE THE FOOTBRIDGE AT **G**. **H** IS A RAILROAD BRIDGE.
- ④ AT **I**, BECAUSE **I** IS SCRUB WOODS. **U** IS AN ORCHARD.
- ⑤ **K**, **J** GOES THROUGH A SWAMP. **L** THE CLOSER CONTOUR LINES OF **M** SHOW A STEEPER CLIMB.
- ⑦ AVOID IT. IT'S A QUARRY—OR MINE.
- ⑧ 510 FEET.
- ⑨ THE SPRING AT **N**.
- ⑩ A CAMPSITE.
- ⑪ ABSOLUTELY NOT. THERE'RE POWER LINES.
- ⑫ A WINDMILL.
- ⑬ AT **T**. THOSE SYMBOLS SHOW HOUSES.
- ⑭ AT THE SANDY BEACH ACROSS FROM **E**.
- ⑮ NO. BROKEN LINES INDICATE A TUNNEL.

